

HAMMOCK PUBLIC CHARTER SCHOOL

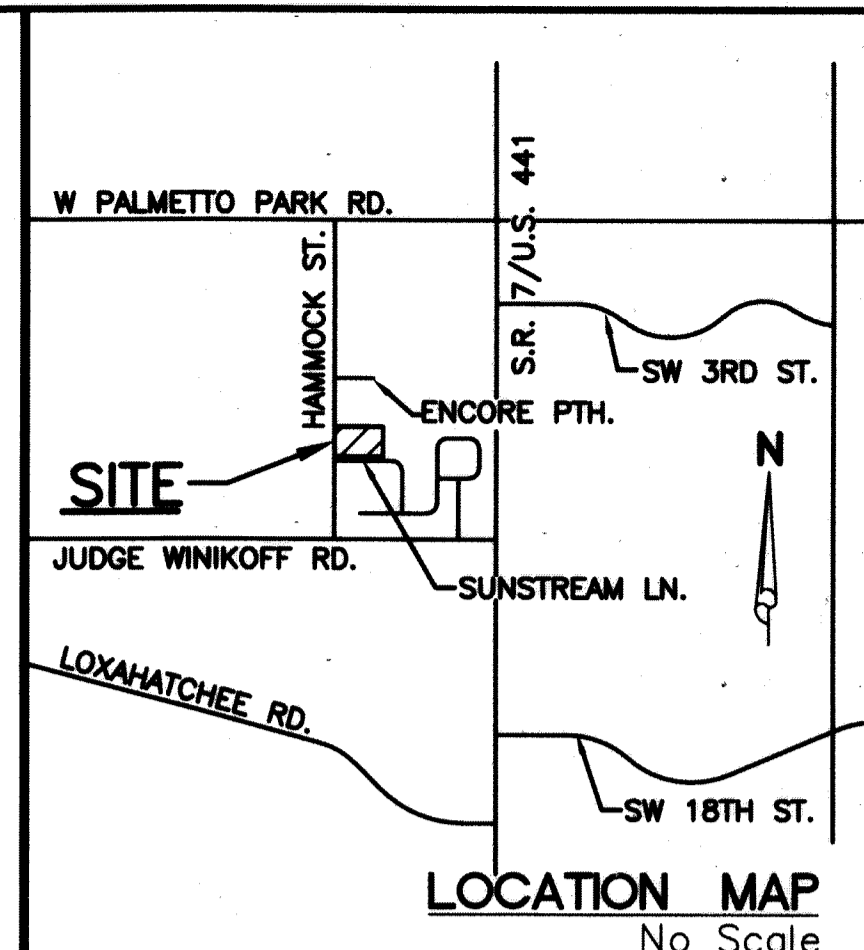
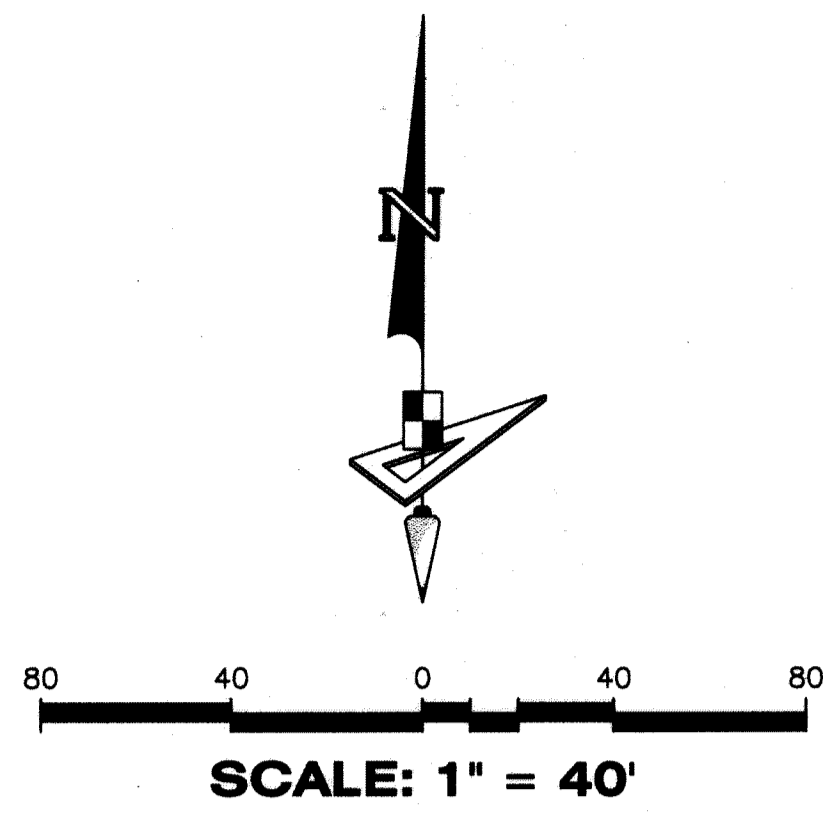
BEING A REPLAT OF A PORTION OF TRACT 64

ACCORDING TO THE FLORIDA FRUIT LANDS COMPANY'S SUBDIVISION NO. 2, AS RECORDED IN PLAT BOOK 1, PAGE 102, OF THE PUBLIC RECORDS OF PALM BEACH COUNTY, FLORIDA, TOGETHER WITH THE VACATED ROAD RIGHT-OF-WAY PER OFFICIAL RECORD BOOK 1841, PAGES 1960 THROUGH 1963, OF THE PUBLIC RECORDS OF PALM BEACH COUNTY, FLORIDA IN SECTION 25, TOWNSHIP 47 SOUTH, RANGE 41 EAST, PALM BEACH COUNTY, FLORIDA

81

SURVEYORS NOTES

- PERMANENT REFERENCE MONUMENTS ARE SHOWN THUS: "■" A 1 1/2" BRASS DISK STAMPED "PRM LB7768" SET IN A 4"x4"x24" CONCRETE MONUMENT.
- BEARINGS SHOWN HEREON ARE BASED ON THE SOUTH BOUNDARY OF TRACT 64, HAVING AN ASSUMED BEARING OF S.88°35'38"W., AS DESCRIBED AND AS SHOWN ON THE PLAT OF BOCA SPRINGS PER PLAT BOOK 64, PAGE 1, PUBLIC RECORDS OF PALM BEACH COUNTY, FLORIDA.
- NOTICE: THIS PLAT, AS RECORDED IN ITS GRAPHIC FORM, IS THE OFFICIAL DEPICTION OF THE SUBDIVIDED LANDS DESCRIBED HEREIN AND WILL IN NO CIRCUMSTANCES BE SUPPLANTED IN AUTHORITY BY ANY OTHER GRAPHIC OR DIGITAL FORM OF THE PLAT. THERE MAY BE ADDITIONAL RESTRICTIONS THAT ARE NOT RECORDED ON THIS PLAT THAT MAY BE FOUND IN THE PUBLIC RECORDS OF PALM BEACH COUNTY.
- ALL DISTANCES ARE GROUND UNLESS OTHERWISE NOTED
SCALE FACTOR 1.0000177
S88°35'38"W (PLAT) (See Note 2)
S88°35'40"W (GRID)
00°00'02" BEARING
CLOCKWISE ROTATION
(PLAT TO GRID)
COORDINATES SHOWN ARE GRID
DATUM NAD83 1990 ADJUSTMENT
ZONE FLORIDA EAST
LINEAR UNIT US SURVEY FEET
COORDINATE SYSTEM 1983 STATE PLANE
TRANSVERSE MERCATOR PROJECTION
GROUND DISTANCE X SCALE FACTOR = GRID



SHEET 2 OF 2

